



✓ Modern design

✓ High operating comfort

✓ New generation construction

SP | SP-E

## FLUSH MOUNTED ROLLER SHUTTER SYSTEMS

■ The roller shutters in flush mounted system are designed mostly for installation in buildings under construction, however they can be installed in already existing buildings too. The roller shutters in BP and BP-E systems fit to building's shape and become its an integral element. The other elements such as flap for under plaster shutter box and guide channels can be matched to the window colours.

■ A large selection of standard colours meets the requirements of the most demanding customers. Colour coats of extruded elements are made using the method of powder coating technology. It provides high quality and durability of the product.

■ Modern design of BP and BP-E boxes allows to carry out the maintenance work on the roller shutter's drive elements without disturbing privacy of household members.

■ The control of roller shutters can be manual or electrical with a motor connected with a control system in order to provide comfortable operation.

■ In flush mounted system we offer the option with insect screen which in summer time enables an effective protection against insects while allowing in daylight and air.

Aluprof's roller shutter systems certified by the Passive House Institute, Darmstadt



# FLUSH MOUNTED ROLLER SHUTTER SYSTEMS

## SHUTTER BOXES

SP



SP-E



SP + MKT



SP-E + MKT



## DRIVES AND ACCESSORIES



Box coilers for rope and strap



Winches for rope and strap



Handles



Springs



Motors



Remote controllers



Pole and key switches



Timer switches

# FLUSH MOUNTED ROLLER SHUTTER SYSTEMS

## PROFILES

Aluminium profiles filled with CFC-free foam perforated or not perforated, type:



**PA 37**  
profile height: 37 mm  
thickness: 8,5 mm



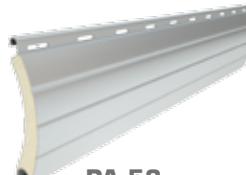
**PA 39**  
profile height: 39 mm  
thickness: 9 mm



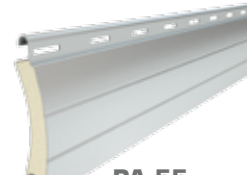
**PA 40**  
profile height: 40 mm  
thickness: 8,7 mm



**PA 45**  
profile height: 45 mm  
thickness: 9 mm

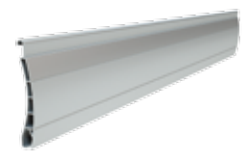


**PA 52**  
profile height: 52 mm  
thickness: 13 mm

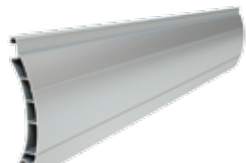


**PA 55**  
profile height: 55 mm  
thickness: 14 mm

Profiles PVC, type:



**PT 37**  
profile height: 37 mm  
thickness: 8 mm



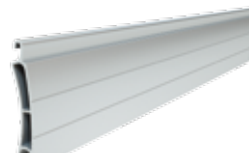
**PT 52**  
profile height: 52 mm  
thickness: 14 mm



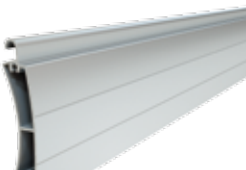
**PEK 52**  
profile height: 52 mm  
thickness: 13 mm

Aluminium profile- grille, type:

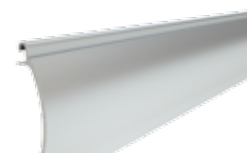
Extruded aluminium profiles, type:



**PE 41**  
profile height: 41 mm  
thickness: 8,5 mm



**PE 55**  
profile height: 55 mm  
thickness: 14 mm



**PEKP 52**  
profile height: 52 mm  
thickness: 13 mm

Supplementary profiles to the grilles, type:

## PROFILES COLOUR RANGE

silver	beige*	brown*	cream white	bordeau*	light grey	anthracite grey
white*	wood dark	yellow*	ivory*	black*	ultra white	basalt grey*
grey*	wood light	red*	fir green*	mahogany	golden oak	quartz grey*
dark beige	dark brown*	green*	steel blue*	nut	golden oak	concrete grey*
				wenge	winchester	mill finish**

The colours don't pattern faithfully upon the real colours. The availability of colours depends on the profiles' type.

\* Special color - on order.

\*\* On request can be painted in any RAL color.

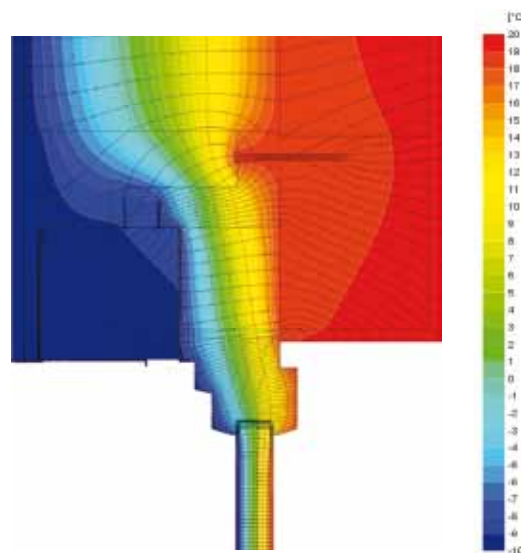


## CERTIFIED THE PASSIVE HOUSE INSTITUTE, DARMSTADT

We are pleased to announce that our roller-boxes SP/165 & SP-E/165 (SP and SP-E top-mounted systems) have obtained a component certificate from the Passive House Institute, Darmstadt.

Passive House Institute, Darmstadt, issued a certificate for the roller-box SP 165 (SP & SP-E top-mounted systems), thus approving the system and its installation as a solution for passive houses.

Suitable installation method enables the use of any window recommended by the PHI, i.e. windows whose heat transfer coefficient  $U_w$  does not exceed  $0.80 \text{ W}/(\text{m}^2\text{K})$ , and the glass coefficient  $U_g$  does not exceed  $0.70 \text{ W}/(\text{m}^2\text{K})$ . It is the first all-in-one solution for top-mounted roller shutter in the PHI passive components base, as well as the first certificate for a Polish company in this group of products.



Isothermal lines