



SKN B+H

## LINTEL ROLLER SHUTTER SYSTEM

■ Roller shutters in BECK+HEUN system are designed for use in newly raised buildings. SKN boxes are ready to use building elements for architects and building contractors. Thanks to broad colour range, they are an ideal decorative element, matching the buildings design.

■ The well-thought-out construction of the roller shutter and good selection of materials ensures effective protection against unwelcome guests. Lintel box made from hard polystyrene foam provides an appropriate thermal insulation, which allows a significant reduction of heating expenses in winter and keeps the interior cool in summer.

■ Aluminum profiles are made from high-grade aluminum sheet metal, covered with double-layer lacquer in PU/PA technique, and characterize with increased resistance to abrasion and the effects of weather.



# LINTEL ROLLER SHUTTER SYSTEM

## LINTEL BOX



## DRIVES AND ACCESSORIES



Under plaster box coilers for strap



Under plaster box coilers for strap -with insulation



Timer switches



Motors



Remote controllers



Pole and key switches

# LINTEL ROLLER SHUTTER SYSTEM

## PROFILES

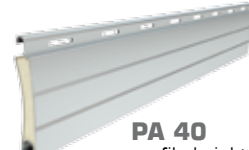
Aluminium profiles filled with CFC-free foam perforated or not perforated, type:



**PA 37**  
profile height: 37 mm  
thickness: 8,5 mm



**PA 39**  
profile height: 39 mm  
thickness: 9 mm



**PA 40**  
profile height: 40 mm  
thickness: 8,7 mm



**PA 45**  
profile height: 45 mm  
thickness: 9 mm

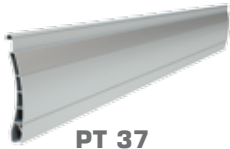


**PA 52**  
profile height: 52 mm  
thickness: 13 mm

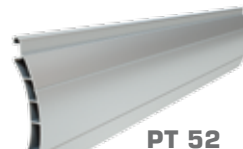


**PA 55**  
profile height: 55 mm  
thickness: 14 mm

Profiles PVC, type:



**PT 37**  
profile height: 37 mm  
thickness: 8 mm



**PT 52**  
profile height: 52 mm  
thickness: 14 mm

## PROFILES COLOUR RANGE

silver	beige	brown	cream white	bordeau*	light grey	anthracite grey
white	wood dark	yellow*	ivory*	black*	ultra white	basalt grey*
grey	wood light	red*	fir green*	mahogany	golden oak	quartz grey*
dark beige	dark brown	green*	steel blue*	nut	golden oak	concrete grey*
					wenge	winchester

The colours don't pattern faithfully upon the real colours.

The availability of colours depends on the profiles' type.

\* Special color - on order.

\*\* On request can be painted in any RAL color.



Doors and windows **25%** of heat loss

Doors and windows **80%** of sunlight



## ROLLER SHUTTERS AND ENERGY BALANCE OF A BUILDING

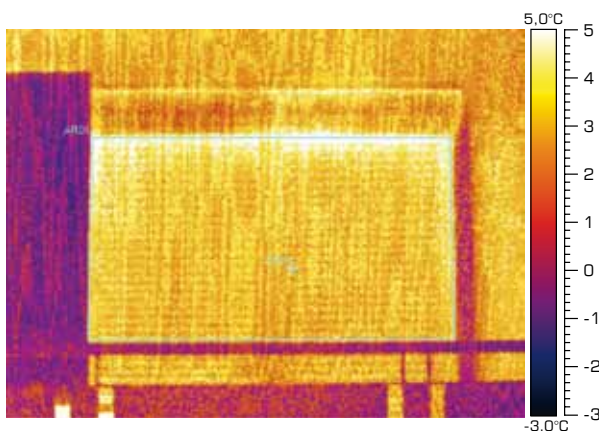
### ■ Do you know that:

In winter, the windows and doors contribute to a loss of 25% of the heat and in summer they absorb the sunlight in 80%?

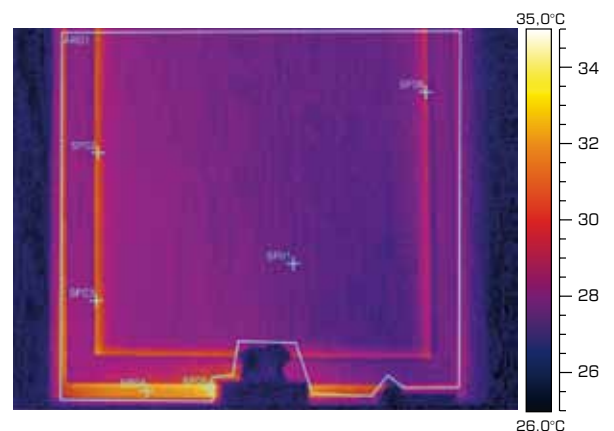
To save energy during the winter and avoid excessive rooms' heating in the summer it is worth to apply the Aluprof roller shutters.

Aluprof roller shutters help to reduce energy costs during the whole year up to 30%.

### With Aluprof roller shutters



GAIN better insulation in winter



REDUCE the heat flow in the summer